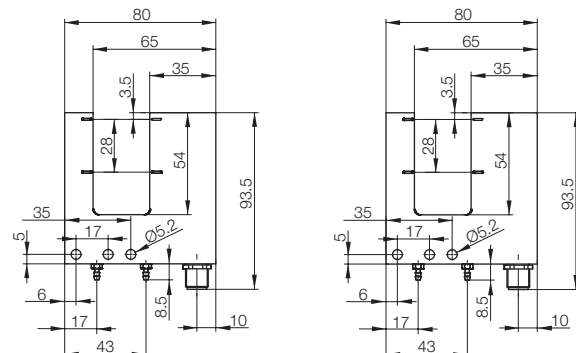
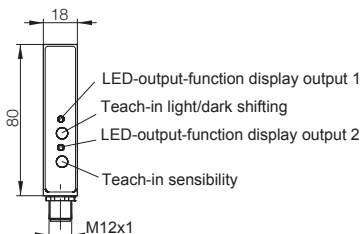
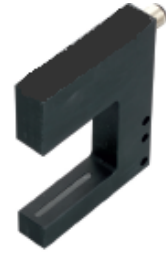
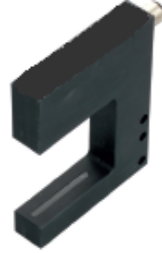
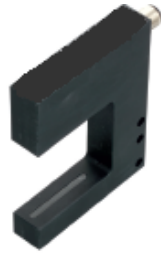
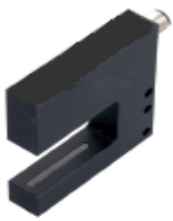




Series			Analog	Analog
Fork width			30 mm	30 mm
Fork depth			54 mm	54 mm
PNP 2	NC/	Article number	15857	
Switch output	NO	Type	OGSA 030-2-ST4	
PNP 1 Analog- und 1 switch-/	NC/	Article number	15858	
error output	NO	Type	OGSA 030-I-ST4	
PNP 2 Switch outputs	NC/	Article number	on request	
with DSC	NO	Type		
Operating voltage U_B			18...30 V DC	18...30 V DC
No-load current I_0 max.			≤ 20 mA	≤ 20 mA
Output current			100 mA	100 mA
Analog output				4...20 mA
Type of circuit			light/dark (switchable)	light/dark (switchable)
Reverse polarity-/short circuit protected			yes/yes	yes/yes
Settings			Teach-in	Teach-in
Light transmitter			Red light	Red light
Wavelength			633 nm	633 nm
Resolution (smallest detectable object)			≤ 80 μm	≤ 80 μm
Repeatability			0,15 mm	0,15 mm
Switching hysteresis			< 0,4 mm	< 0,4 mm
Output function display			2× LED yellow	2× LED yellow
Response time			2 ms	2 ms
Switching frequency			500 Hz	500 Hz
Measurement field length			28 mm	28 mm
Protection class according to IEC 60529			IP 67	IP 67
Ambient temperature T_a			-5...+55°C	-5...+55°C
Ambient light limit according to			EN 60947-5-2	EN 60947-5-2
Material	Housing		AL anodized	AL anodized
	Optical surface		PMMA	PMMA
Connection			M12-plug-connector, 4-pins	M12-plug-connector, 4-pins





Analog
30 mm
54 mm

Analog
50 mm
54 mm

Analog
50 mm
54 mm

Analog
50 mm
54 mm

15860
OGSA 050-2-ST4

15859
OGSA 030-V-ST4

15861
OGSA 050-I-ST4

15862
OGSA 050-V-ST4

on request

18...30 V DC

≤ 20 mA

100 mA

0...10 V DC

light/dark (switchable)

yes/yes

Teach-in

Red light

633 nm

≤ 80 μm

0,15 mm

< 0,4 mm

2× LED yellow

2 ms

500 Hz

28 mm

IP 67

-5...+55°C

EN 60947-5-2

AL anodized

PMMA

M12-plug-connector, 4-pins

18...30 V DC

≤ 20 mA

100 mA

light/dark (switchable)

yes/yes

Teach-in

Red light

633 nm

≤ 80 μm

0,15 mm

< 0,4 mm

2× LED yellow

2 ms

500 Hz

28 mm

IP 67

-5...+55°C

EN 60947-5-2

AL anodized

PMMA

M12-plug-connector, 4-pins

18...30 V DC

≤ 20 mA

100 mA

4...20 mA

light/dark (switchable)

yes/yes

Teach-in

Red light

633 nm

≤ 80 μm

0,15 mm

< 0,4 mm

2× LED yellow

2 ms

500 Hz

28 mm

IP 67

-5...+55°C

EN 60947-5-2

AL anodized

PMMA

M12-plug-connector, 4-pins

18...30 V DC

≤ 20 mA

100 mA

0...10 V DC

light/dark (switchable)

yes/yes

Teach-in

Red light

633 nm

≤ 80 μm

0,15 mm

< 0,4 mm

2× LED yellow

2 ms

500 Hz

28 mm

IP 67

-5...+55°C

EN 60947-5-2

AL anodized

PMMA

M12-plug-connector, 4-pins

